



Symons Capital Management, Inc. – Small Cap Value Composite

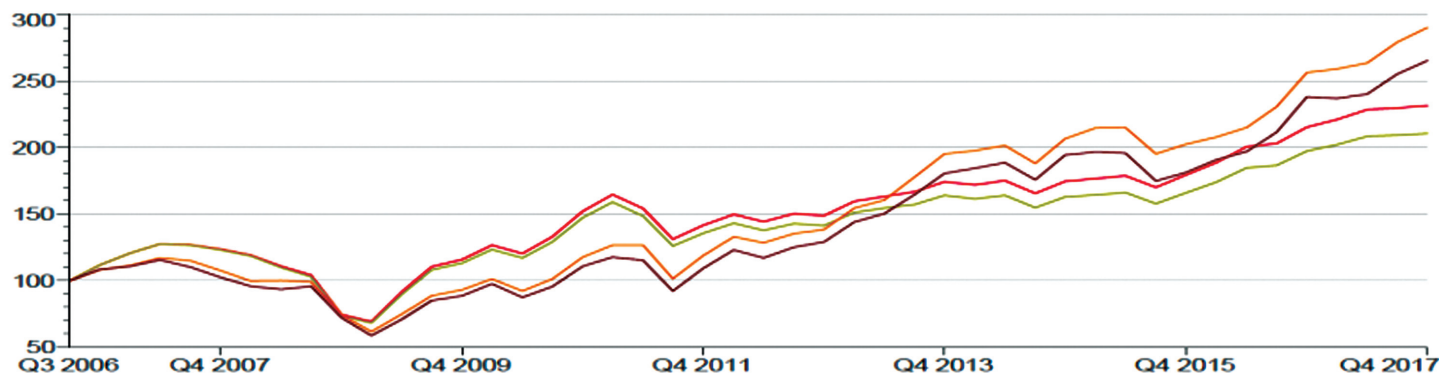
Zephyr StyleADVISOR: Symons Capital Management, Inc.

Manager Performance

October 2006 – December 2017

(Single Computation)

- Symons Small Cap Value Composite (gross of fees)
- Symons Small Cap Value Composite (net of fees)
- S&P SmallCap 600®
- S&P SmallCap 600® Value



October 2006 - December 2017: Summary Statistics – Supplemental information to the full composite disclosure presentation.

| MODERN PORTFOLIO THEORY STATISTICS | RETURN | EXCESS RETURN vs. MARKET | CUMULATIVE RETURN | STANDARD DEVIATION | RISK-ADJ. PERFORMANCE | UP CAPTURE vs. MARKET | DOWN CAPTURE vs. MARKET | ALPHA vs. MARKET | BETA vs. MARKET | NUMBER OF OBSERVATIONS |
|--|--------|--------------------------|-------------------|--------------------|-----------------------|-----------------------|-------------------------|------------------|-----------------|------------------------|
| Symons Small Cap Value Composite (gross of fees) | 7.74% | -2.18% | 131.42% | 18.24% | 7.91% | 78.52% | 85.08% | -0.56% | 0.86 | 45 |
| Symons Small Cap Value Composite (net of fees) | 6.83% | -3.09% | 110.32% | 18.22% | 6.97% | 75.23% | 87.16% | -1.40% | 0.85 | 45 |
| S&P SmallCap 600® | 9.93% | 0.00% | 189.97% | 18.82% | 9.93% | 100.00% | 100.00% | 0.00% | 1.00 | 45 |
| S&P SmallCap 600® Value | 9.06% | -0.87% | 165.26% | 19.59% | 8.81% | 99.50% | 105.52% | -1.02% | 1.03 | 45 |

| SMALL CAP VALUE PEER GROUP RANKING (SOURCE ZEPHYR)*** | MEDIAN RANK | 1 YEAR 258 MNG | 3 YEARS 244 MNG | 5 YEARS 218 MNG | 7 YEARS 198 MNG | 10 YEARS 174 MNG | ANALYSIS PERIOD 160 MNG |
|---|-------------|----------------|-----------------|-----------------|-----------------|------------------|-------------------------|
| Symons Small Cap Value Composite (gross of fees) | 88.48% | 74.35% | 35.95% | 89.06% | 94.87% | 86.52% | 54.13% |
| Symons Small Cap Value Composite (net of fees) | 92.90% | 79.30% | 50.75% | 92.90% | 96.21% | 93.02% | 75.71% |
| S&P SmallCap 600® | 5.28% | 16.15% | 7.72% | 3.14% | 1.39% | 3.59% | 5.67% |
| S&P SmallCap 600® Value | 11.33% | 34.42% | 19.18% | 6.80% | 5.70% | 12.14% | 22.01% |

Note: This data is presented as supplemental information to the fully compliant GIPS® presentation. Please see back for additional disclosure information. Returns include the reinvestment of all income and dividends. Net of fee performance was calculated using actual management fees. Past performance is not indicative of future results.

*** Zephyr creates domestic equity universes based on investment style / fund behavior using the Morningstar, Mobius, Nelson's, PSN, and eVestment Alliance databases. Ratings were presented by Zephyr StyleADVISOR as the result of surveys created and conducted by Zephyr. SCM did not pay a fee to participate in these surveys.



SCHEDULE OF COMPARATIVE PERFORMANCE STATISTICS (12-31-2017)

| YEAR | GROSS OF FEES | NET OF FEES | S&P SMALLCAP 600* | S&P SMALLCAP 600* VALUE | NUMBER OF ACCOUNTS IN COMPOSITE | ANNUAL COMPOSITE DISPERSION | 3 YEAR EX-POST STD DEVIATION COMPOSITE | 3 YEAR EX-POST STD DEVIATION S&P SMALLCAP 600* | 3 YEAR EX-POST STD DEVIATION S&P SMALLCAP 600* VALUE | VALUE OF COMPOSITE (USD MILLIONS) | % NON-FEE PAYING ASSETS | % TOTAL FIRM ASSETS IN COMPOSITE | TOTAL FIRM ASSETS (USD MILLIONS) |
|-------|---------------|-------------|-------------------|-------------------------|---------------------------------|-----------------------------|--|--|--|-----------------------------------|-------------------------|----------------------------------|----------------------------------|
| 2006* | 11.51% | 11.51% | 7.85% | 8.39% | 2 | n/a | n/a | n/a | n/a | 1.54 | 100.00% | 0.56% | 274.04 |
| 2007 | 10.80% | 10.38% | -0.30% | -5.54% | 10 | 0.53% | n/a | n/a | n/a | 7.33 | 23.37% | 2.43% | 301.13 |
| 2008 | -39.64% | -40.24% | -31.07% | -29.51% | 21 | 1.38% | n/a | n/a | n/a | 7.50 | 13.02% | 2.95% | 253.59 |
| 2009 | 55.02% | 53.59% | 25.57% | 22.85% | 23 | 3.78% | n/a | n/a | n/a | 12.90 | 14.96% | 4.19% | 308.03 |
| 2010 | 31.55% | 30.32% | 26.31% | 24.72% | 25 | 1.18% | n/a | n/a | n/a | 18.84 | 13.65% | 4.78% | 394.36 |
| 2011 | -6.93% | -7.87% | 1.02% | -1.38% | 31 | 0.56% | n/a | n/a | n/a | 23.89 | 9.61% | 5.36% | 445.63 |
| 2012 | 5.15% | 4.22% | 16.33% | 18.21% | 31 | 0.60% | 14.43% | 18.96% | 19.95% | 24.17 | 9.93% | 5.21% | 463.79 |
| 2013 | 17.05% | 16.01% | 41.31% | 39.98% | 27 | 0.85% | 11.18% | 15.37% | 15.95% | 21.85 | 12.15% | 4.15% | 526.15 |
| 2014 | 0.21% | -0.71% | 5.76% | 7.54% | 22 | 0.22% | 8.91% | 12.36% | 12.68% | 18.16 | 14.70% | 3.49% | 520.60 |
| 2015 | 2.71% | 1.80% | -1.97% | -6.67% | 18 | 0.35% | 8.46% | 13.18% | 13.42% | 15.92 | 16.50% | 3.46% | 460.26 |
| 2016 | 20.04% | 19.00% | 26.56% | 31.32% | 18 | 0.66% | 9.24% | 14.95% | 15.48% | 18.33 | 16.37% | 3.79% | 483.91 |
| 2017 | 7.54% | 6.61% | 13.23% | 11.51% | 17 | 1.69% | 7.90% | 13.60% | 14.47% | 18.37 | 16.76% | 4.37% | 420.43 |

* Performance represents a partial year-to-date return from 10/01/2006 through 12/31/2006.
n/a – Annual Dispersion and/or 3 Year Ex-Post Standard Deviation not applicable for this period.

COMPOSITE NOTES

- The Symons Small Cap Value Composite was created in October 2006 and consists of all fully discretionary portfolios that are managed in the Small Cap Value style. The investment objective for the Symons Small Cap Value investment discipline is long-term capital appreciation achieved by investing in companies that can be purchased at attractive valuations. The minimum account size for initial inclusion in this composite is \$250,000.
- For comparison purposes the composite is measured primarily against the S&P SmallCap 600® index, and secondarily against the S&P SmallCap 600® Value index. Effective October 1, 2012, Symons Capital Management, Inc. substituted the FTSE Russell 2000® Value index for the S&P 500® index as a secondary benchmark. Effective September 16, 2015, the FTSE Russell 2000® Value index replaced the FTSE Russell 2000® index as the primary benchmark. The FTSE Russell 2000® Value index primarily includes small capitalization value stocks that better represented our portfolio management and stock selection style than the S&P 500® index, which primarily includes only large-capitalization stocks and the FTSE Russell 2000® index, which primarily encompasses small capitalization stocks. Effective April 1, 2017, the S&P SmallCap 600® index replaces the FTSE Russell 2000® Value index as a primary benchmark, and the S&P SmallCap 600® Value index replaces the FTSE Russell 2000® index as a secondary benchmark, since FTSE Russell index returns are no longer available without paying substantial annual licensing fees. The S&P SmallCap 600® index measures the small-cap segment of the U.S. equity market using a capitalization-weighted index and is designed to ensure companies are liquid and financially viable. The S&P SmallCap 600® Value index consists of stocks from the S&P SmallCap 600® that exhibit value characteristics based on book value, earnings, and sales to price. Both benchmarks are unmanaged indices that primarily include small capitalization stocks that are representative of Symons Capital Management, Inc.'s Small Cap Value portfolio management and stock selection style. A direct investment in an index may involve different liquidity, risks and tax considerations. The Adviser may invest in securities outside of those represented in the indices. S&P SmallCap 600® returns are shown for the entire composite history.
- Results are based on fully discretionary accounts under management, including those accounts no longer managed by the firm. The U.S. Dollar is the currency used to express performance. Composite performance is presented net of foreign withholding taxes on dividends, interest income, and capital gains. Returns include the effect of foreign currency exchange rates. Returns are presented gross and net of management fees and include the reinvestment of all income. Gross of fees returns are presented before management and custodial fees, but after all trading expenses. Net of fee performance was calculated using actual management fees. Past performance is not indicative of future results.
- The investment management fee is: 1.25% on the first \$1 million; 1.00% on the next \$9 million; 0.90% on the next \$15 million; 0.80% on the next \$25 million; and 0.70% above \$50 million. Actual investment advisory fees incurred by clients may vary.
- The annual composite dispersion is an asset-weighted standard deviation calculated for the accounts in the composite the entire year. Three-year annualized ex-post standard deviation of the composite and benchmark are not presented prior to 2012, because 36 monthly composite returns were not available until December 31, 2012.
- Securities purchased by SCM are listed on a major exchange with published values. Generally, month-end valuations as shown on custodian account statements are used to calculate portfolio assets and returns. Any cash flow equal to or greater than 5% of a portfolio's market value would cause the portfolio to be revalued and accounted for properly so as not to distort performance. Additional information regarding the policies for valuing portfolios, calculating performance and preparing compliant presentations is available upon request.
- Symons Capital Management, Inc. is an independent investment management firm, not affiliated with any parent organization, established in 1983 and registered with the U.S. Securities and Exchange Commission under the Investment Advisers Act of 1940. Prior to October 1, 2001, the firm was known as Dollins Symons Management, Inc. The firm maintains a complete list and description of composites, which is available upon request.
- Symons Capital Management, Inc. claims compliance with the Global Investment Performance Standards (GIPS®) and has prepared and presented this report in compliance with the GIPS® standards. Symons Capital Management, Inc. has been independently verified for the periods January 1, 1996 through March 31, 2017 by Ashland Partners & Company, LLP; and from April 1, 2017 through September 30, 2017 by ACA Performance Services LLC. Verification assesses whether (1) the firm has complied with all the composite construction requirements of the GIPS® standards on a firm-wide basis and (2) the firm's policies and procedures are designed to calculate and present performance in compliance with the GIPS® standards.
- The Symons Small Cap Value composite has been examined for the periods from October 1, 2006 through March 31, 2017 by Ashland Partners & Company, LLP; and from April 1, 2017 through September 30, 2017 by ACA Performance Services LLC. The verification and performance examination reports are available upon request.